



# HEAVEN CITY



Project by  
**NIFTY GROUP**







## PREMIUM TOWNSHIP

Experience the pinnacle of modern living and business excellence with Heaven City an exquisite blend of residential and commercial spaces designed to meet all your lifestyle and investment needs.



- Nestled in the vibrant prime location
- Sector 122 of Mohali, Punjab
- 0 km from Chandigarh
- Located on PR 6 Road, Mohali







# RESIDENTIAL EXCELLENCE

Heaven City provides meticulously planned plots and thoughtfully designed apartments in a picturesque environment, perfect for families and individuals seeking a serene yet sophisticated living experience.

## RESIDENTIAL PREMIUM PLOTS AND LUXURIOUS APARTMENTS

- Plots Range 150 to 500 sq. yards
- 2BHK, 3BHK, and 4BHK apartments with Modern architectural design
- Premium quality finishing and fittings
- Energy-efficient fixtures and Balconies with panoramic views



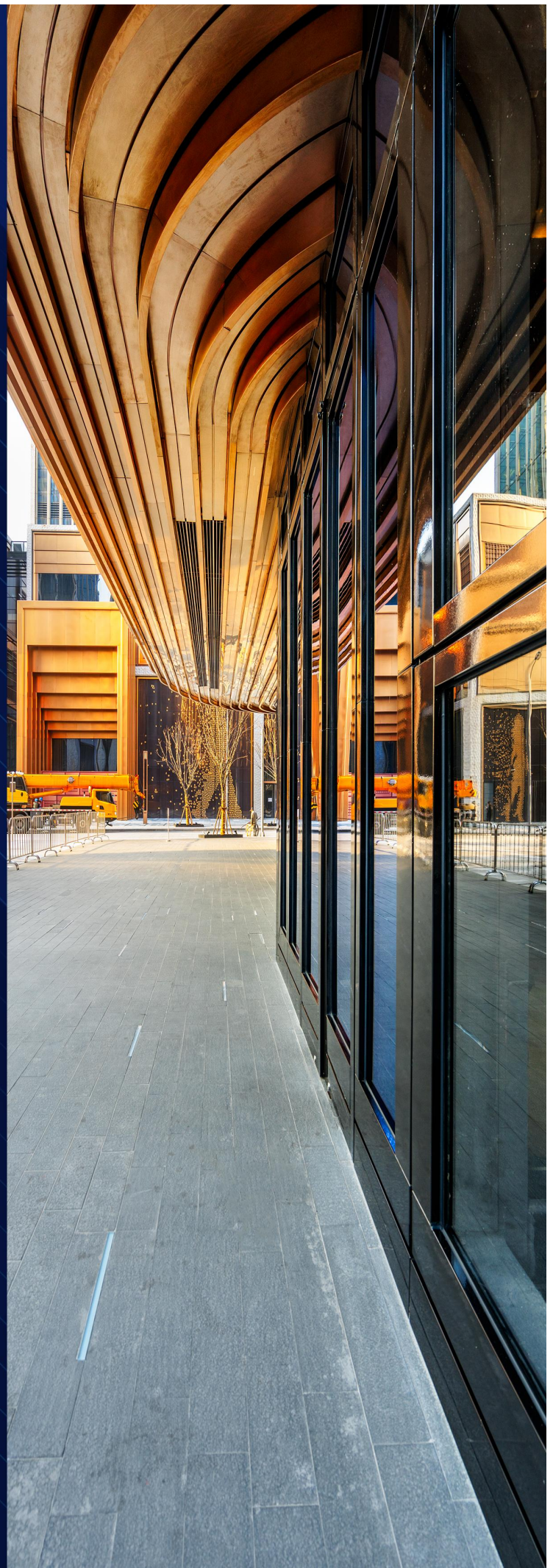


# COMMERCIAL BRILLIANCE

Heaven City offers a range of commercial spaces designed to accommodate your business needs. Whether you're looking to set up a retail store, an office, or a service center, our commercial units provide the perfect environment for growth and success.

## PRIME BUSINESS SPACES

- » Flexible floor plans and customizable spaces
- » High visibility and foot traffic
- » Contemporary design and infrastructure
- » Future growth potential

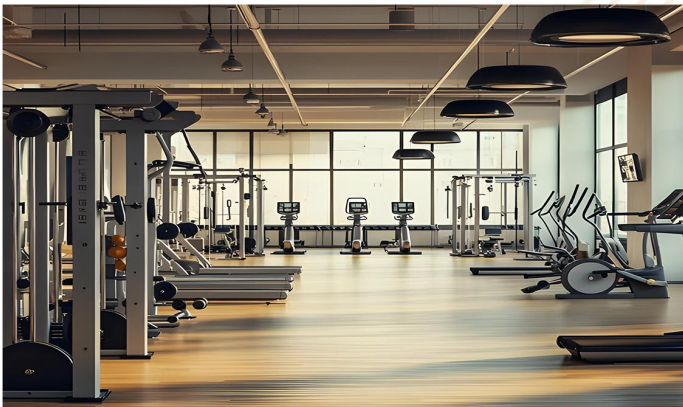




# AMENITIES



- » Lush landscaping and parks
- » Gated community with 24/7 surveillance
- » Business lounges and conference rooms
- » Ample parking space
- » Dedicated children's play areas
- » Landscaped gardens, Jogging tracks and walking paths
- » Community clubhouse
- » State-of-the-art gymnasium and Swimming pool



# WHY CHOOSE HEAVEN CITY?

- » Prime Location
- » Investment Potential
- » Comprehensive Amenities
- » Luxury and Comfort
- » Exceptional Design
- » Commercial Potential







**Address:**  
**Sector 122, PR6 Road, Mohali, Punjab**

**Email ID:**  
**Info@heavencity.in**

**Website:**  
**heavencity.in**



**Project by**  
**NIFTY GROUP**

